

## Pressure Gauges

New England Manufacturing, with a huge inventory of over 1,200 pressure gauges always in stock, is the gauge leader in the water flow testing industry. We offer discounts on large orders.

**We specialize in calibration with NIST traceable certification and a quick turnaround time.** For new gauges at the time of purchase the NIST certification cost is \$15.00.

\*Unless specified, gauges do not come with certification.



**Model #202 NEMFG Custom (2 1/2" Dial) Liquid Filled Gauge** This gauge is manufactured exclusively for NEMFG. This is a very accurate and economical gauge with the graduations you need for precision. **1% full scale accuracy**, stainless steel case with brass internals, easy to read dials, and specifically designed for water flow testing. **\$40.95**

| Dial Ranges  | Major Pound Graduations | Minor Graduations | Smallest Graduations |
|--------------|-------------------------|-------------------|----------------------|
| 0-30psi      | 5                       | 1                 | 5                    |
| 0-60psi      | 10                      | 5                 | 1                    |
| 0-100psi     | 20                      | 10                | 2                    |
| -30-0-100psi | 20                      | 10                | 2                    |
| 0-160psi     | 20                      | 10                | 2                    |
| 0-200psi     | 20                      | 10                | 2                    |
| -30-0-200psi | 20                      | 10                | 2                    |
| 0-300psi     | 50                      | 10                | 5                    |
| -30-0-300psi | 50                      | 10                | 5                    |



**Model #203 NEMFG Custom (3.2" Dial) Dry Stabilizer Gauge** Designed and made only for NEMFG this gauge is light with a large easy to read dial. **The unique stabilizer movement allows the indicator needle with knife-edge pointer to read steady under pressure or pulsation.** The 3.2" dial, stainless case, **1% full scale accuracy**, calibration adjustable movement make this a great offering for those that prefer dry gauges. **\$49.95**

| Dial Ranges  | Major Pound Graduations | Minor Graduations | Smallest Graduations |
|--------------|-------------------------|-------------------|----------------------|
| -30-0-30psi  | 10                      | 5                 | 1                    |
| 0-60psi      | 10                      | 5                 | 1                    |
| 0-100psi     | 10                      | -                 | 2                    |
| 0-160psi     | 20                      | 10                | 2                    |
| 0-200psi     | 20                      | 10                | 2                    |
| -30-0-200psi | 20                      | 10                | 2                    |
| 0-300psi     | 30                      | 10                | 5                    |
| 0-400psi     | 50                      | 25                | 5                    |



### Model #204 Ashcroft 1009 AW Duralife (2½" Dial) Gauge

This unique, *very light* gauge has **Grade 1A accuracy (1% full scale.)** Though it is a dry gauge, the patented PLUS! performance dampens vibration, shock, and pulsation effects. It has a stainless steel case and 1/4" NPT bottom connection.

The PowerFlex movement utilizes a unique suspended construction which isolates the gauge movement from the socket, thereby substantially reducing the effects of shock, vibration and pulsation. True Zero reduces reading errors by using a "zero box" instead of conventional dial stop pins.

**\$76.95**

| Dial Ranges  | Major #°d Graduations | Minor Graduations | Smallest Graduations |
|--------------|-----------------------|-------------------|----------------------|
| 0-30psi      | 5                     | 1                 | ½                    |
| 0-60psi      | 5                     | 5                 | 1                    |
| 0-100psi     | 10                    | 5                 | 1                    |
| -30-0-100psi | 10                    | 5                 | 1                    |
| 0-160psi     | 20                    | 10                | 2                    |
| 0-200psi     | 20                    | 10                | 2                    |
| -30-0-200psi | 20                    | 10                | 2                    |
| 0-300psi     | 30                    | 10                | 5                    |
| 0-400psi     | 50                    | 25                | 5                    |



### Model #205 Ashcroft 1009 AW Duralife (3½" Dial) Gauge

This 3½" model has all the same features of the standard model #204, 2½" dial size described above, but with the larger dial.

**\$89.95**

| Dial Ranges  | Major Pound Graduations | Minor Graduations | Smallest Graduations |
|--------------|-------------------------|-------------------|----------------------|
| 0-60psi      | 5                       | 5                 | 1                    |
| 0-100psi     | 10                      | 5                 | 1                    |
| -30-0-100psi | 10                      | 5                 | 1                    |
| -30-0-150psi | 20                      | 10                | 2                    |
| 0-200psi     | 20                      | 10                | 2                    |
| -30-0-200psi | 20                      | 10                | 2                    |
| 0-300psi     | 30                      | 10                | 5                    |
| -30-0-300psi | 30                      | 10                | 5                    |
| 0-400psi     | 50                      | 25                | 5                    |
| 0-600psi     | 50                      | -                 | 10                   |

### Model #208

Sturdy and accurate 4" liquid filled gauge designed for water flow and pump testing. This industry standard 4" dial size comes in 1% full scale accuracy, brass internals and stainless steel case with the normal 1/4" NPT bottom connection. The dial graduations are custom designed for obtaining accurate water flow test readings.

**\$59.95**



| Dial Ranges  | Major Pound Graduations | Minor Graduations | Smallest Graduations |
|--------------|-------------------------|-------------------|----------------------|
| 0-60psi      | 10                      | 5                 | 1                    |
| 0-100psi     | 20                      | 10                | 1                    |
| -30-0-150psi | 30                      | 10                | 2                    |
| 0-200psi     | 20                      | 10                | 2                    |
| -30-0-200psi | 20                      | 10                | 2                    |
| 0-300psi     | 50                      | 10                | 2                    |
| -30-0-300psi | 50                      | 10                | 2                    |
| 0-600psi     | 100                     | 50                | 10                   |



### **Model #209 NEMFG Custom 3 1/2" Liquid Filled Gauge**

This popular 3 1/2" liquid filled gauge was designed for water flow and pump testing with all the right graduations. The size is unique, being lighter and more compact than the industry standard 4" dial size, allowing increased versatility. The 30-0-300psi and 0-300psi come in 2lb. increments. It features 1% full scale accuracy, 3 1/2" dial, brass internals and stainless case.

**\$59.95**

| Range       | Major Pound Graduations | Minor Graduations | Smallest Graduations |
|-------------|-------------------------|-------------------|----------------------|
| 0-60psi     | 10                      | 5                 | 1                    |
| 0-100psi    | 20                      | 10                | 2                    |
| 30-0-150psi | 30                      | 10                | 2                    |
| 0-160psi    | 20                      | 10                | 2                    |
| 0-200psi    | 20                      | 10                | 2                    |
| 30-0-200psi | 20                      | 10                | 2                    |
| 0-300psi    | 50                      | 10                | 2                    |
| 30-0-300psi | 50                      | 10                | 2                    |
| 0-600psi    | 100                     | 50                | 10                   |



### **#210 Ashcroft Fire Protection Sprinkler Service Gauge**

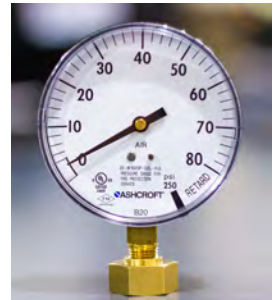
(3 1/2" Dial) Standard Ashcroft 3 1/2" sprinkler gauge is FM & UL approved. Available in 300psi **for water**. Black figures on a white background and bronze bourdon tube. Case is ABS/polycarbonate blend-Ashcroft patented *Power-Flex* movement-Connection 1/4" NPT lower-Grade B accuracy (3-2-3% of span).

**\$17.95**

### **#211 Ashcroft Fire Protection Sprinkler Service Gauge**

(3 1/2" Dial) Standard Ashcroft 3 1/2" sprinkler gauge is FM & UL approved. 0/80 retard to 250psi for air. Black figures on a white background and bronze bourdon tube. Case is ABS/polycarbonate blend-Ashcroft patented *Power-Flex* movement-Connection 1/4" NPT lower-Grade B accuracy (3-2-3% of span).

**\$17.95**



### **#212 Model Ashcroft DG25 Digital Gauge**

This is an extremely accurate field gauge (0.5% or better). Each gauge is serialized and feature a LCD, weather protective enclosure, heavy duty protective boot, **9 different units of measurement** and long battery life. **It is stocked in two ranges: 30-0-300psi and 30-0-600psi. Note: Like all other pressure gauges, it should NEVER be hand twisted into a fitting. Hand twisting this gauge can ruin the circuitry. A wrench to tighten the gauge must always be used. This gauge is supplied with a NIST traceable certification at no additional charge.**

**\$310.00**

### **#PS-1B Pressure Snubber (Brass)**

Recommended for use with Model #212 or any gauge requiring protection from sudden pressure increases or fluctuations (e.g. fire pump). 1.625" in length and 1/4" NPT male x female.

**\$12.50**

